

**1210 AWG Vinyl Insulated Flanged Spade**

**Material:** Tin Plated Copper with Butted Seam

**Insulation Material:** Yellow PVC Vinyl

**Maximum Electrical Current:** 50 Amps

**Maximum Electrical Rating:** 75°C, 600V

**Material Thickness (T):** .039

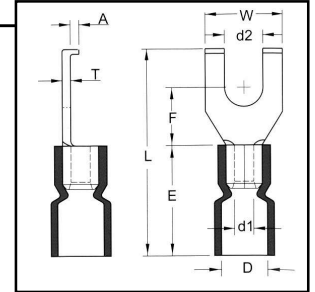
**Barrel ID (d1):** .134

**Barrel OD (D):** .248

**Barrel Length (E):** .555

**J Type:** .268

**J Type:** .551



HOFFMAN PART NO.	STUD SIZE	DIMENSIONS (INCHES)					UL	TAPE MOUNTED REEL QTY	DIE FOR TAPE MOUNTED	HAND TOOL
		STUD DIAMETER	TONGUE WIDTH	STUD CLEARANCE	LENGTH	FLANGE HEIGHT				
		d2	W	F	L	A				
FVL1210S3BR2	6	0.146	0.299	0.244	1.047	0.059	Y	1000	3V1210	YNM2210
FVL1210S3BR2/J	6	0.146	0.299	0.244	0.992	0.059	Y	1000	3V1210	YNT1210S
FVL1210S4BR2	8	0.169	0.299	0.244	1.047	0.059	Y	1000	3V1210	YNM2210
FVL1210S4BR2/J	8	0.169	0.299	0.244	0.992	0.059	Y	1000	3V1210	YNT1210S
FVL1210S5BR2	10	0.209	0.299	0.244	1.047	0.059	Y	1000	3V1210	YNM2210
FVL1210S5BR2/J	10	0.209	0.299	0.244	0.992	0.059	Y	1000	3V1210	YNT1210S

**Vinyl Insulated Flanged Spade Terminal with Copper Support Sleeve**

**2216 AWG Vinyl Insulated Flanged Spade with Copper Support Sleeve**

**Material:** Tin Plated Copper with Butted Seam

**Insulation Material:** Red PVC Vinyl with Funnel Entry Copper Support Sleeve

**Maximum Electrical Current:** 18 Amps

**Maximum Electrical Rating:** 75°C, 600V

**Material Thickness (T):** .030

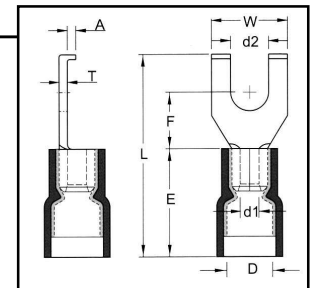
**Barrel ID (d1):** .067

**Barrel OD (D):** .165

**Barrel Length (E):** .413

**J Type:** .157

**J Type:** .378



HOFFMAN PART NO.	STUD SIZE	DIMENSIONS (INCHES)					UL	TAPE MOUNTED REEL QTY	DIE FOR TAPE MOUNTED	HAND TOOL
		STUD DIAMETER	TONGUE WIDTH	STUD CLEARANCE	LENGTH	FLANGE HEIGHT				
		d2	W	F	L	A				
FVD2216S3B/J	6	0.146	0.295	0.201	0.705	0.059	Y	1000	3V2216	YNT2216
FVD2216S3B	6	0.146	0.295	0.201	0.768	0.059	Y	1000	3V2216	YNM2210D
FVD2216S4B/J	8	0.169	0.295	0.201	0.705	0.059	Y	1000	3V2216	YNT2216
FVD2216S4B	8	0.169	0.295	0.201	0.768	0.059	Y	1000	3V2216	YNM2210D
FVD2216S5B/J	10	0.209	0.295	0.201	0.705	0.059	Y	1000	3V2216	YNT2216
FVD2216S5B	10	0.209	0.295	0.201	0.768	0.059	Y	1000	3V2216	YNM2210D

